

# Open Doors

The Newsletter of St. James Episcopal Church

---

February 2008

FROM THE



One of my favorite radio programs is *This I Believe* on NPR. In it, ordinary people speak about something that is fundamental to them.

This weekend there was a wonderful reflection by Susan Cooke Kittredge, about mending (as in sewing). She says

“Mending something is different from fixing it. Fixing it suggests that evidence of the problem will disappear. I see mending as a preservation of history and a proclamation of hope. When we mend broken relationships, we realize that we're better together than apart, and perhaps even stronger for the rip and the repair...

“Mending doesn't say, “This never happened.” It says instead, as I believe the Christian cross does, “Something or someone was surely broken here, but with God's grace it will rise to new life.” So too my old pajamas, the fence around the garden, the friendship torn by misunderstanding, a country being ripped apart by economic and social inequity and a global divide of enormous proportions — they all need mending. I'm starting with the pajamas.”

Lent is, in many ways, about mending. We

take time to trim away the broken threads and piece our lives back together, making something that is more whole out of something broken. Sometimes it even becomes something beautiful, like when you embellish a mended tear with embroidery or sequins.

Lent is also a time for thinking about what it is that we believe. In the early church it was used as a time of preparation for those who were to be baptized at Easter. This Lent our sermons will focus on the baptismal covenant (including the Creed), as a way of thinking about what we believe.

Many people give up something for Lent. Others of us take on a practice that focuses our attention on God and others. The Christian Education Committee has planned a range of activities to help us do this (see later in the newsletter). Another fun activity is the Church of England's program called *Love Life Live Lent*. Each day people are encouraged to take one action to be a good neighbor. Find it at <http://www.livelent.net/>

Finally, for all those who missed the (excellent, short) Annual Parish Meeting, I would like to congratulate Jeff Smith (warden), Karen Douglass, Karen Noack and Donna Wachter (vestry) on their elections, and to express my great thanks to Ron Tebbutt (warden) and Stan Schubel (vestry) for their

service: they have been wonderful to work with. Donations were made to the Leukemia Society and Episcopal Relief and Development in their names in thanksgiving for their ministry.

- Raewynne

activities, and make recommendations for possible new activities that are less “labor intensive.” A lot of this work can be done at home searching for ideas on the computer.

We are currently in negotiations to sell 493 North Country Road (the rental house). We will keep you informed as this progresses.

- Pat Westlake

### A WORD FROM THE WARDEN

The Annual Parish Meeting was held on Sunday, February 3. Congratulations to the following members of the Vestry: Jeff Smith was elected as Warden for a 2-year term; Donna Wachter was elected to her second 3-year term on the Vestry; Karen Noack was elected to her first 3-year Vestry term (she had previously completed an un-expired term); and Karen Douglass was elected to her first 3-year term.

Donna Austin was appointed as the parish delegate to the 2008 Diocesan Convention, and Kathy Sides was appointed alternate delegate.

Donna Austin has agreed to chair a committee on the Stained Glass windows in the church. A report was completed by Bovard Studio to address the proper venting and coverings of all windows and the restoration of 3 windows. The committee will read through the report, evaluate, and decide if further reports should be received from other stained glass studios before making recommendations to the Vestry.

We are also searching for a chair and committee members for a “Fund Raising Committee”. The purpose of this committee is to evaluate our current fund raising

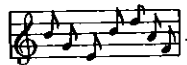
### 2008 VESTRY

Wardens	Pat Westlake (584-6628)
	Jeff Smith (862-6972)
Vestry	Marc DeSimone (724-3691)
	Karen Douglass (928-6633)
	George Krall (862-6563)
	Debbie LaMano (584-3545)
	Chris Mauro (689-1419)
	Karen Noack (981-3989)
	Edna Rousseau (584-7853)
	Jack Schultheis (689-9467)
	Donna Wachter (737-4066)



## WHERE ARE WE GOING?

For the last 6 months or so, we have been reading Diana Butler Bass's book *Christianity for the Rest of Us*, which explores how different churches practice their faith. During Lent we're taking a break, but in the season of Easter, we will be gathering to think what practices we at St James are already doing, and what we feel called to. We invite all parishioners to read the book, or pick up a copy of the weekly summaries of the book group (available at the back of the church), and pray and think about who you believe we are called to be as a church, and where we might be going.



## MUSICAL NOTES

**The Youth Choir** will sing on Palm Sunday, (March 16), Maundy Thursday evening (March 20) and at 8 A.M. Easter Sunday (March 24). There will be a practice every Sunday beginning February 10 from 11:20 to 11:40. Please try to attend as many as these as possible.

**The Chancel Choir** needs more singers. We meet to practice every Thursday at 8 P.M. in the Webster room. Please consider "giving up" an hour of your time each week in Lent for this wonderful ministry.

- Dara Linthwaite



## WALKING IN THE WILDERNESS

During Lent, the Christian Formation and Education Committee is pleased to offer four avenues of Lenten observance. We encourage you to take part in one or more of these.

**1. Tuesday evening parish-wide time of prayer** (at home or in Mills Hall). Continuing the well-received pattern of families and individuals praying at home at a specific time each week during Advent, we have set aside Tuesday evenings, 7:30 P.M., to use Bread for the World's weekly Lenten devotional. Copies of the Bread for the World "table tents" noting weekly readings, prayers, and actions, will be available beginning Ash Wednesday. Pray from home, or join other parishioners in Mills Hall on Tuesday evenings, beginning on February 12.

**2. Daily Lenten devotional booklets** from Episcopal Relief and Development will also be available as a journey of prayer, reading, reflection, and action to take simple steps toward achieving the Millennium Development Goals. Booklets are available in the narthex (one per family).

**3. Friday lunchtime fasting.** All parishioners are invited to fast from lunch on the Fridays of Lent and to contribute to ER&D for world hunger relief (through a parish offering) the money they would have otherwise spent on lunches.

**4. Lenten study.** On Tuesday evenings, February 12 through March 11, we will use the Kerygma study, *Hosanna: A Spiritual Journey Through Holy Week*. This study examines the writings of St. Paul and the four Gospels as they pertain to the events of Holy Week.

7:00 P.M. - Eucharist in the sanctuary  
(optional)  
7:30 - 8:45 P.M. - Lenten study series in  
Mills Hall, beginning with  
parish-wide time of prayer (see  
#1)

Please sign up in Mills Hall or the narthex,  
and indicate if you would like to purchase a  
resource book for the study (\$13).

Questions? Please see Chris Mauro, Les  
Bengtson, Jack Schultheis or Kathy Sides.

- *Chris Mauro*

**FINANCIAL STEWARDSHIP  
CAMPAIGN  
THANK YOU**

As of February 4<sup>th</sup>, the Stewardship  
Committee is pleased to report that 79  
parishioners have made pledges totaling  
\$155,814 to support Christ's work through  
St. James, and would like to thank them by  
naming them below:

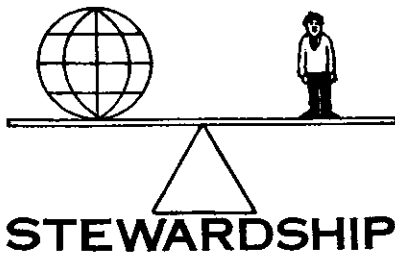
Donna Austin  
Tony & Barbara Bastin  
Bill & Maria Bataller  
Les & Joan Bengtson  
Robert & Cynthia Bennett  
Bill and Amelia Bowden  
Patricia Brack  
Tim Brady & Leslie Price  
Peter Cahill  
Nancy & John Caponegro  
Marjorie Cobb  
Stephanie Coleman  
Ron & June Davies  
Claude & Fjeril Deal  
Marc & Deirdre DeSimone

Kathleen Dexter  
Tony DeVito  
John & Flo Donohue  
David & Karen Douglass  
Theresa Euler  
Jean Fitzhenry  
Jerilyn Glogg  
Sandra Grigoletto  
Dennis & Donna Guinaw  
Art & Arlyne Gureck  
Ernie & Louise Harders  
Shirley Huenlich  
Hank & Eileen Hull  
Diane Kahn  
Tony & Susan Knapp  
George & Sue Krall  
Walt & Pat Kregler  
Charlie & Marge Kreussling  
Kelly Lally  
Debra LaMano  
Ken & Ruth LeCluse  
Barbara LoPresto  
Laurie Mannix  
Dolores Marge  
Ralph & Pat Martinsen  
Doris Masters  
Chris & Kathy Mauro  
Dan & Carol Maybee  
Tony & Joan Mercep  
Linda Misa  
Bob & Lil Moleti  
Mike & Polly Neyssen  
Karen Noack  
Pat Pawelko  
Nancy Petschauer  
Peter & Claudette Plaschka  
Jade Plaschka  
Chris & Sheila Pryor  
Joan Quinn  
Nancy Rasmussen  
Kurt & Diane Rettig  
Grace & Alexandra Rich  
Edna Rousseau  
Anna Rung

Ruth Rutigliano  
 Stan & Nancy Schubel  
 Jack Schultheis & Cathi Hart  
 Gloria Scibilia  
 Bob & Marty Scott  
 Chris & Anita Sequino  
 Kathy Sides  
 Jeff Smith  
 Art & Joan Strassle  
 Ron & Ann Tebbutt  
 Harry & Betty Toop  
 Richard Tracy  
 Robin Treuting & Mark Buxton  
 Donna Wachter  
 David Westlake  
 Pat Westlake  
 Bill & Patti White  
 Raewynne Whiteley  
 Ken & Lani Wille

There are still some pledges due to come in, but we want to close out this financial campaign with this "thank you" and move on this spring concentrating on the other ways our church members act as Christ's Stewards.

*- In Christ,  
 The Stewardship Committee  
 Chris Mauro, Edna Rousseau,  
 Jack Schultheis  
 Ron Tebbutt, Chair*



**DO YOU SHOP AT COSTCO OR BJS???**  
**Do you enjoy coffee hour?**

We need someone to shop for the supplies. What does this mean? Every week the people assigned coffee hour duty write down what supplies are low. Just check this list once or twice a month (it's on the bulletin board in the kitchen). The supplies could include regular and decaf coffee, tea, sugar, cups, napkins, or plates. All of this can be purchased when you are doing your own shopping. Just keep the receipt. You will be reimbursed.

For the past few years the Wardens have been doing this job....Please speak with me if you will help out with this task, and I will give you all the details.

*- Pat Westlake*

**LUNCH BUNCH**

The Lunch Bunch will hold their February get together at Lotus East, 416 North Country Road, St. James at 12 Noon on Tuesday, February 26. Call Fjeril Deal at 724-3720 to sign up. All parishioners are welcome.

**PRESIDING BISHOP'S LENTEN  
MESSAGE**

**Keeping a holy Lent: prayer, fasting,  
almsgiving**

By Katharine Jefferts Schori, February 05, 2008

[Episcopal News Service] The Church gradually took on the discipline of Lent in solidarity with those preparing for baptism at the Easter Vigil. That preparation work has traditionally been summarized as prayer and study, fasting, and almsgiving. Today we might remember the origins of Lent, take in our traditional understandings, and use these 40 days plus Sundays to prepare to renew our own baptismal vows. This ancient understanding of prayer, study, fasting, and almsgiving shapes the lives we lead. Each of us is baptized into a life of relationship with God (prayer), relationship with self on behalf of others (fasting), and relationship with all the rest of creation (almsgiving). Lent brings a regular opportunity to tune up our Christian life and relationships.

What happens when you take your car in for a tune-up? Most of us no longer do that work ourselves, because the computers in our vehicles are usually beyond our reach. They are not, however, beyond the ken of those with appropriate skill, training, and tools. The spiritual life of a Christian can also benefit from the assistance of technicians (trained practitioners) -- priests, spiritual directors, confessors, a Cursillo reunion, or 12-step group. The opportunity to review the functioning of spark plugs, change the oil, test the cylinder compression, and rotate, fill, and maybe even replace the tires keeps our cars running.

The same kind of attention to one's spiritual life can yield better gas mileage (focused

energy for effective living) and effective transportation (how do I get from where I start to my destination?). Reviewing the rules of the road can make the trip much more pleasant for us and others (the early followers of Jesus actually called their practice "the road" or "the way"). We human vehicles need an effective connection to the source of life, guidance and directions (prayer and study), regular maintenance (fasting), and effective ways to connect with the world (almsgiving). This Lent could be an opportunity to learn new ways of praying, or what the apostles teach, or what Jesus says about money. It could also be a time to take on a new prayer discipline -- maybe practicing seeing the image of God in every person on the street, or being grateful for the hidden blessings of the parts of creation that challenge us (gray days, viruses, mosquitoes -- I'm still working on mosquitoes!). We might practice compassion for the coworker who drives us crazy (and perhaps seek help in learning more effective ways to relate).

The ancient tradition of fasting is about self-discipline in what we eat and drink, and in today's world it is also about judicious consumption of the world's goods -- not just what we buy at the mall, but how we use water, how we leave the air around us, how we deal with "garbage," and the size of our carbon footprint. It is a recognition that how we use the blessings of creation has a vast relationship to how our neighbors can also enjoy those blessings.

Giving alms means caring for those in need. The word comes from the same root as *eleison*, as in *Kyrie eleison* (Lord, have mercy), and it really means compassion. How do we approach and respond to the people around us and far away who are "crying in the wilderness"? The work of Lent is about

cultivating a compassionate heart that will shape all our encounters in the coming year and years. Sunday schools often take on a specific alms aim during Lent, like filling a penny jar for Heifer Project, or serving lunch at a homeless feeding center. Almsgiving has traditionally meant acting compassionately with one's treasure, but it is just as appropriate to think about how we use our time and talent mercifully.

As we approach Lent -- early in February this year -- let me invite you to join in tuning up your spiritual life. Take an hour to make an inventory -- what mechanics know as a squawk list. Which spark isn't as hot as it might be? Which tire is going flat? What kind of oil are you going to add this time? And what are you going to do with the old, dirty stuff? That's what the altar is for, in a spirit of repentance and return, and it's not unlike recycling the old so it can be used for good. A blessed trip this year!

### DID YOU KNOW?

In the Christian Ed building foyer there is a table of interesting reading. Magazines and journals include *The Living Church* (weekly), *Anglican Digest*, and various newsletters.

### WANTED

Wanted: an old Kodak carousel slide projector to view family slides. Contact Polly and Mike Neyssen at 751-8451.

## MARRIAGE ENRICHMENT EMPOWERING COUPLES

The Mercer School of Theology is offering a marriage enrichment day on April 12, 2008 from 9 A.M. to 3 P.M. at the Mercer School of Theology in Garden City. During this workshop you will be able to:

- \* Identify your couple strengths
- \* Build on and increase your couple strengths
- \* Identify some of your stumbling blocks
- \* Learn how to overcome your stumbling blocks by turning them into "stepping stones"
- \* Empower your relationship by developing a plan for building a stronger and more satisfying couple relationship.

The fee is \$60 per couple. Lunch will be provided. Registration forms can be downloaded from the diocesan website. For additional information, contact Al Rosenvinge, Episcopal Community Services at 665-7701 or via email: [Arosenvingeecs@ecslongisland.net](mailto:Arosenvingeecs@ecslongisland.net). Deadline for registration is April 2. Early registration is encouraged since space is limited.



## EPIPHANY BRUNCH RECIPE

Carol Maybee found this recipe and it has been a "hit" every year.

### CRÈME BRULÉE FRENCH TOAST

Serves 6

- 1 stick unsalted butter
- 1 cup brown sugar
- 2 tablespoons corn syrup
- 1 (8" - 9") round loaf country style bread
- 5 eggs
- 1½ cups half and half
- 1 teaspoon vanilla
- 1 teaspoon Grand Marnier
- ¼ teaspoon salt

Melt butter, sugar, and corn syrup in saucepan, stirring until smooth. Pour into 9" x 13" pan. Cut six slices from the center portion of the bread. Trim crusts from slices. Arrange in a single layer in the baking pan. In bowl, whisk eggs, half and half, vanilla, Grand Marnier, and salt until well-combined. Pour evenly over bread. Cover and refrigerate at least 8 hours.

Pre-heat oven to 350°. Bring mixture to room temperature. Bake uncovered in middle of oven 35-40 minutes, or until puffed and edges are pale golden. Serve immediately.

## FEBRUARY CALENDAR

- 3 Annual Parish Meeting
- 4 Finance Committee 7:30 P.M.
- 5 Shrove Tuesday Pancake Supper  
Recovery Group 7:30 P.M.
- 6 **Ash Wednesday**  
Holy Eucharist 12 Noon & 8 P.M.  
Choir rehearsal 9 P.M.
- 7 Bible study 10 A.M.
- 11 Vestry meeting 7:30 P.M.
- 12 Holy Eucharist 7 P.M.  
Lenten series 7:30 P.M.  
Recovery Group 7:30 P.M.
- 14 Bible study 10 A.M.  
Choir rehearsal 8 P.M.
- 18 **Presidents' Day** - office closed
- 19 Holy Eucharist 7 P.M.  
Lenten series 7:30 P.M.  
Recovery Group 7:30 P.M.
- 21 Bible study 10 A.M.  
Choir rehearsal 8 P.M.  
Chamber of Comm. Mtg. 6 P.M.  
& Long Term Care Insurance  
Presentation - Mills Hall
- 26 Holy Eucharist 7 P.M.  
Lenten series 7:30 P.M.  
Recovery Group 7:30 P.M.
- 28 Bible Study 10 A.M.  
Choir rehearsal 8 P.M.

## **FEBRUARY BIRTHDAYS**

Kerrick Wille  
Peter Cahill  
Joan Quinn  
Annabelle Wille  
Colette Tarantino  
Scott Eckert  
George Krall  
Joan Mercep  
Kelly Lally  
Lorelei Glogg  
Jeff Smith  
James Schultheis  
George Donohue  
Amelia Bowden  
Kevin White  
Sarah Schubel  
Leah Tarantino  
Dan Maybee  
Becky Linthwaite



## **FEBRUARY ANNIVERSARIES**

Tom & Theresa Donohue